

Slide  
1

“A Barn Raising for the Zechariah Boodey Farmstead”

Presentation

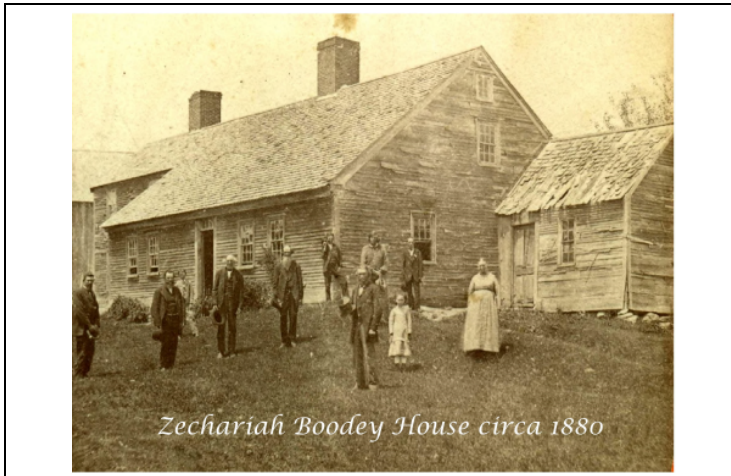
Accepting the Gift of the 42' x 42' Barn

Warrant Article 11

2018

Zechariah Boodey Farmstead Committee

Slide 2

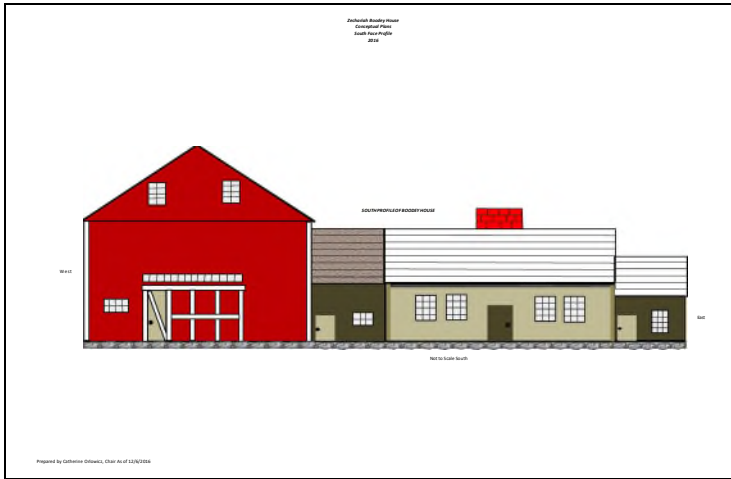


Article 11: To see if the Town will vote to accept a gift of real property being a 42' x 42' barn for use by the Boodey Farmstead Project, said barn being a gift to the Town of New Durham.

**Slide 1:**

The Zechariah Boodey Farmstead Committee has proposed a plan for reconstruction, construction, and repurposing for the Zechariah Boodey House. The plan is based on historic photographs taken during the celebration for the 100th Anniversary of the beginning of the Free Will Baptist Church. From this photograph the farmstead features the log cabin, the cape style house, the addition (or ell) and the barn.

Slide 3



**Slide 2:**

This slide has the conceptual plan developed in 2014. It matches the layout of building, shown in the photograph of the first slide. This proposed plan is an outcome from completing market research for future uses for the property. The barn would provide a larger function facility. The house would be a small gathering area.

Slide 4



**Slide 3 and 4:**

The Committee learned about this barn's availability in April 2017 during a fundraising event. This is the south/east faces of the exterior of the barn to be gifted to the town. The next slide is the north/west faces. This very early 19th century English style barn is located in Alton, NH, an area once part of New Durham Gore. The Gore, being part of New Durham until 1796. The barn features many of the classic architectural elements expected to be seen in a barn from this time period. It does retain a high degree of integrity of its original materials. This is the South – east profiles of the barn.

Slide 5



This is the north – west profiles of the barn.

Slide 6



**Slide 5 and6:**

The next two slides show the interior of the barn. It is timber frame construction, with hand hewn beams, and timber joinery. These timbers, the roofing boards and sheathing on the walls will be reused when this is reconstructed.

Slide 7



**Slide 5 and6:**

The next two slides show the interior of the barn. It is timber frame construction, with hand hewn beams, and timber joinery. These timbers, the roofing boards and sheathing on the walls will be reused when this is reconstructed.

Slide 8



Slide 7:

This is a letter from Andrew Cushing, our field representative from New Hampshire Preservation Alliance, stating the barn is in "excellent condition" and they are "supportive of and thankful for the committee's foresight and diligence in saving the barn".

Slide 9

Since April much effort has gone into moving forward with the project. The committee has worked very hard fundraising to cover the expenses for dismantling the barn. As of this writing the committee needs to raise another \$1,557.00 to meet the goal to cover the costs for bringing the barn to New Durham. We have been working with UNH Senior Capstone Students from the Engineering Department. A group of young men are developing site plans, which will be used when meeting with local regulator boards. They are also developing detailed conceptual plans and will produce a three D model of our project. A young lady from this same department approached us asking if the Boodey Farmstead project could be used in her independent study project.

Slide 10

Accepting the gift of the barn will benefit our project by:

- Supporting the vision of the plan.
- Honoring the builders by preserving the past, which will support the future needs in our community.
- It will provided a space for larger functions and gatherings.
- Reduces the cost for purchasing new materials, and the costs associated with new construction of a new timber frame building.
- New construction will not have the look and feel of a barn constructed during the colonel time period.
- The barn can be reconstructed and used. This would provide opportunity to generate revenue. Part of the revenue would be placed into the Capital Reserve Fund, to support the reconstruction for the entire farmstead project.

Thank you for the opportunity to speak about Article 11. The Committee is asking for your support to accept the gift of this barn.

For additional information please contact Chair Catherine Orlowicz at [cathyo@tds.net](mailto:cathyo@tds.net).